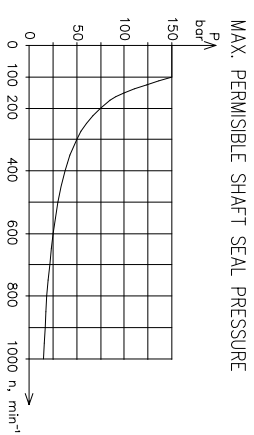
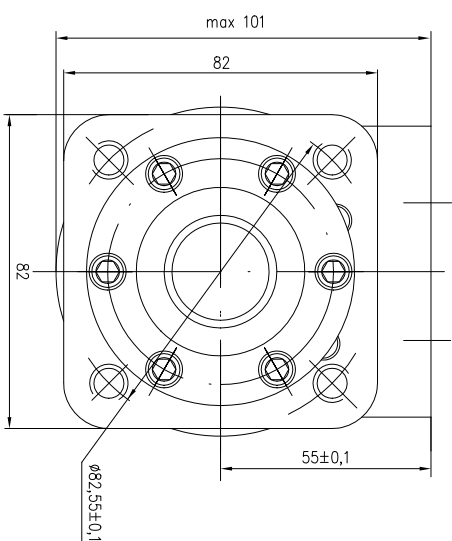
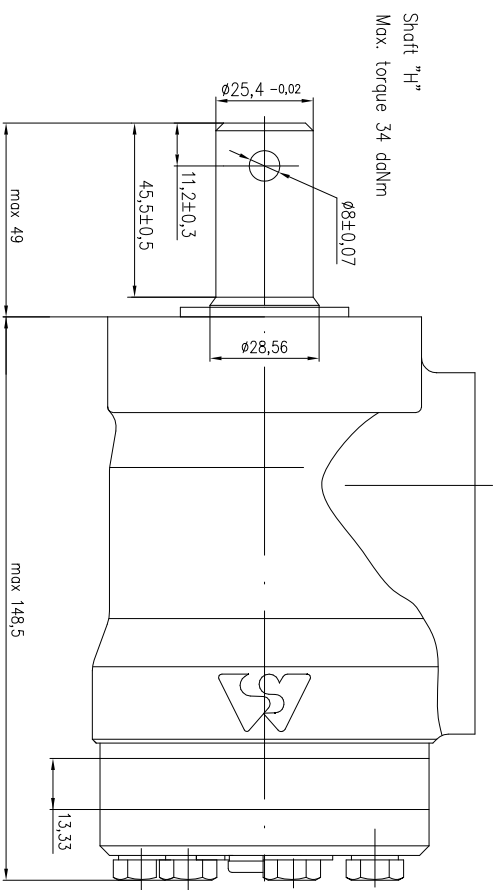
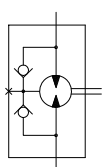


Hydraulic scheme

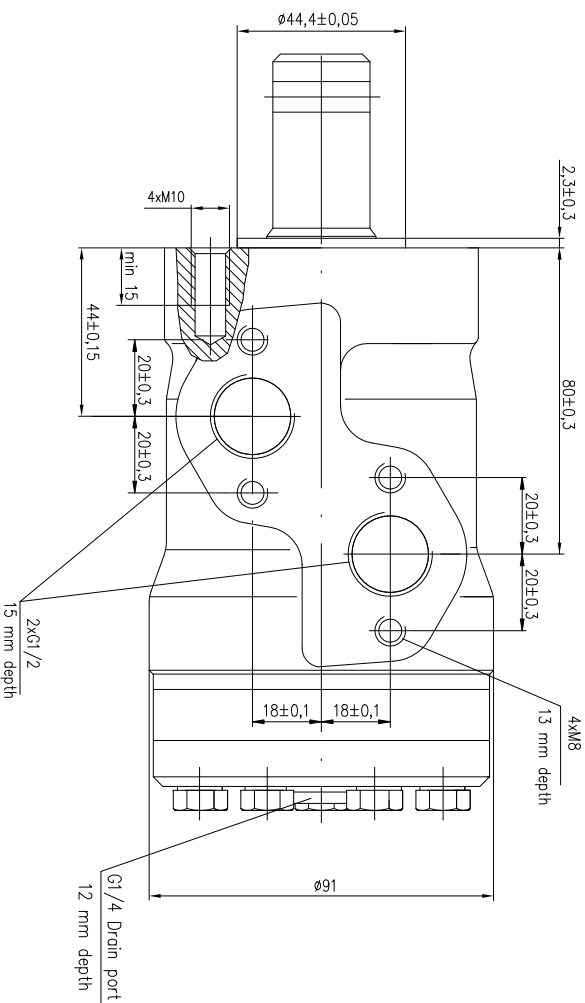


I. Technical DATA

1. Displacement of the Motor, cm^3/rev 99
2. Max. Torque, ddNm
cont. 19,3
int. 23,7
3. Max. Speed, RPM
cont. 605
int. 755
4. Max. Pressure Drop, bar
cont. 140
int. 175
5. Max. Oil Flow, lpm
cont. 60
int. 70
6. Max. Inlet Pressure, bar
cont. 175
int. 200

II. Technical REQUIREMENTS

1 Painted with Alkyd-styrenated enamel, Black RAL 9005.



FOR APPROVAL

APPROVED BY

DATE

Item/Quantity	Title/Name, designation, material, dimension etc	Article No./Reference
Material	Weight	Date
	Designed by	Rev.
	Tonevd	0
		Scale
		1
Hydraulic Motor MPQ 100HDP-01/4		

